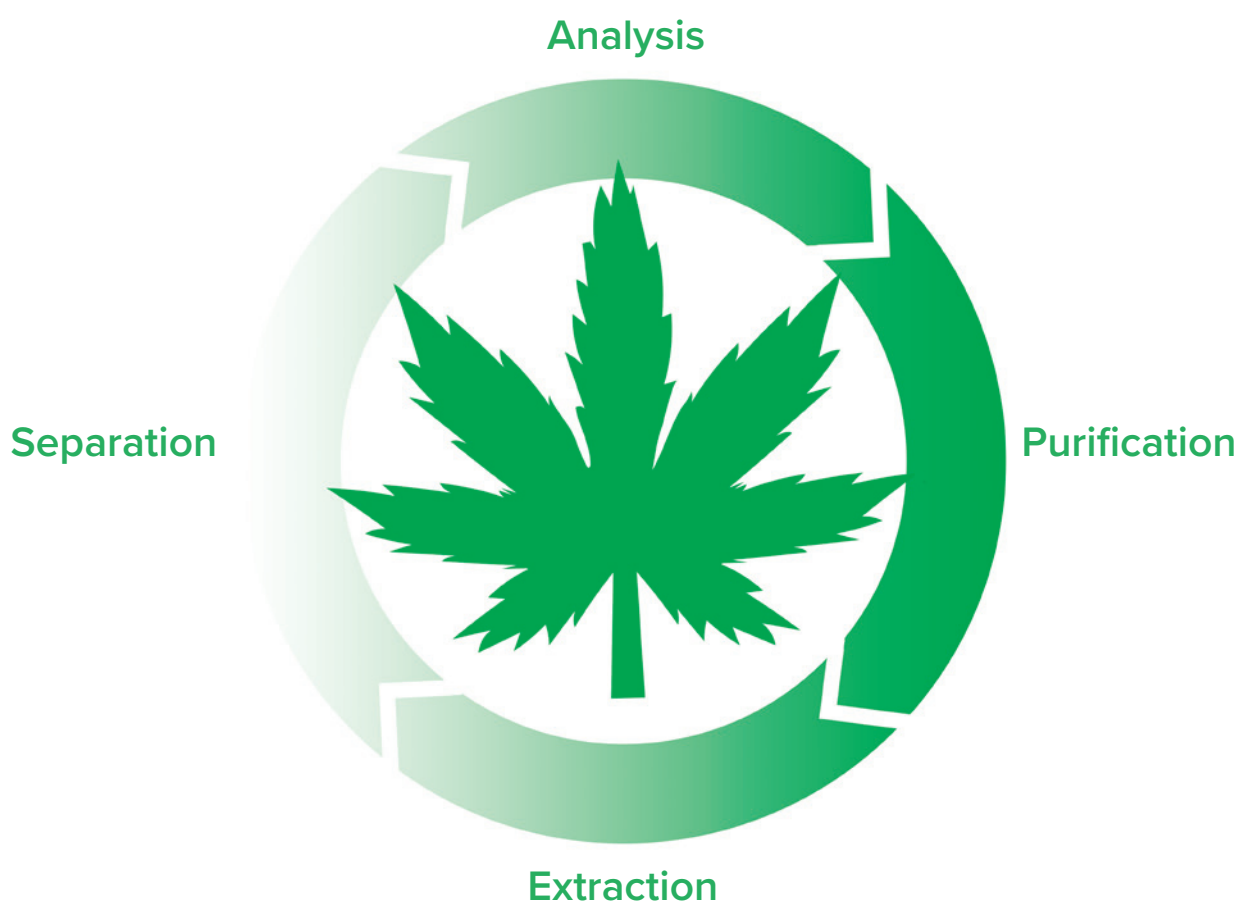


Cannabis Chromatography

Potency and Purification Solutions



JASCO


prism
sciences

We are the cannabis chromatography experts.

Combining more than 50 years of chromatography instrument expertise from JASCO with Prism Sciences extensive cannabis lab experience has produced chromatography solutions, technical knowledge and method development beyond compare.

From a basic potency HPLC to a sophisticated Preparative SFC for purification, all of the chromatography systems offer predeveloped methods for turnkey solutions to meet testing and production needs. Each system comes complete with the columns, standards and methods for immediate results upon installation.

Our continued application support team can help further streamline methods and operations to maximize your lab productivity. As lab requirements change and progress, our chromatography and cannabis experts are ready to assist in meeting those demands.

Table of Contents

Potency HPLC	3
Potency and Purification SFC	4

HPLC

- Compact HPLC
- Sub 5-minute analysis
- Turnkey solution

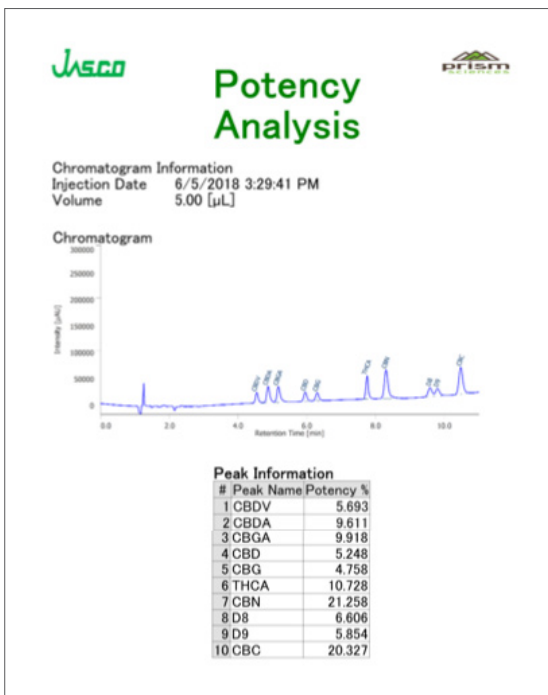
Our pre-developed HPLC method provides automated peak identification and potency determination in less than 5 minutes. The system includes columns, standards, and ChromNAV software. The easy to learn software includes the sub 5-minute method, integration, peak identification and report generation for a turn-key solution requiring just a few clicks.

The HPLC itself requires less than 12 inches of bench space. An autosampler for higher throughput can be added for complete automation as any time to future-proof your lab needs. All consumable parts have front panel access and designed for user replacement to ensure around the clock operation and simple preventative maintenance.



Customizable Reports

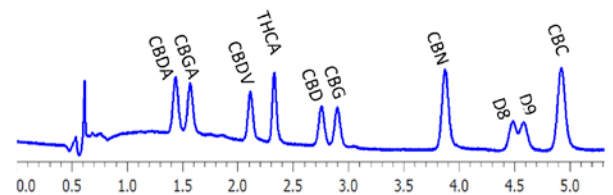
The pre-built report style provides immediate potency results, but the report can easily be customized to any format and include your company logo.



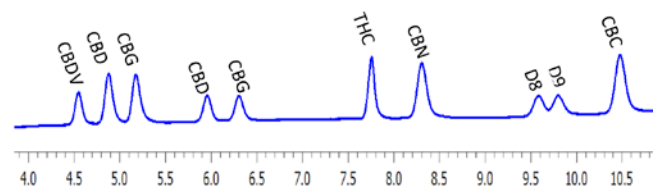
High Throughput, High Sensitivity and High Resolution

Our pre-developed method provides high throughput and high sensitivity in a sub 5-minute analysis. When higher resolution is required, a 2nd predeveloped method is employed on the same column. Whether your requires are high throughput, high sensitivity or high resolution, the system covers them all.

High Throughput and High Sensitivity



High Resolution



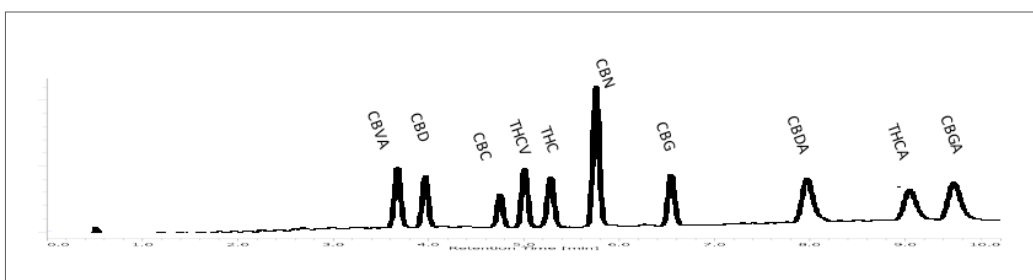
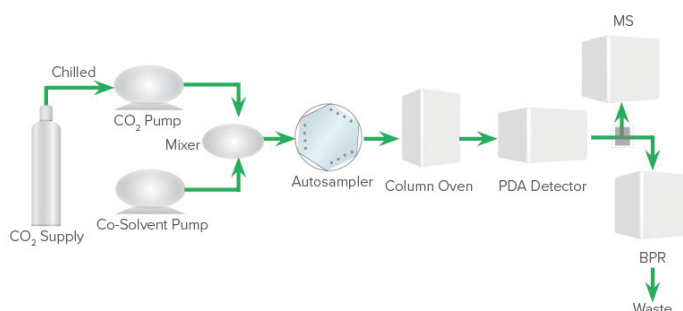
SFC

- Potency analysis
- Cannabinoid purification
- Standards production

Supercritical Fluid Chromatography requires a supercritical fluid (most commonly CO₂) as the primary component of the mobile phase. The intrinsic characteristics of low viscosity and high diffusivity of supercritical CO₂ makes SFC faster and more efficient than traditional HPLC. SFC achieves faster flow rates with shorter analysis times without the requirement for higher pressures like UHPLC. As in reverse phase HPLC, an alcoholic co-solvent or modifier can be combined with the CO₂ to increase the solvation strength and can be used in isocratic mode or gradient.

SFC Advantages

SFC not only provides cannabinoid potency, but within the same system can provide scale up to purify individual cannabinoids. This purification capability provides the ability to control and formulate the amount and presence of each cannabinoid. In addition, SFC can be used for the production of standards or to isolate one individual cannabinoids.



Analytical SFC
Potency Analysis
Small Scale Purification



Hybrid SFC
Potency Analysis
Medium Scale Purification



Prep SFC
Large Scale Purification
Standards Production